

Osmose



Configuration Quick Start Guide

Osmose O-Calc® LE
Configuration Quick Start Guide
24 October 2016

Copyright

© 2002-2018 Osmose Utilities Services, Inc. All rights reserved.

The contents of this publication are intended for distribution to and use by the licensed owner of the related software, and copies and reproductions of the document may be made solely for use by the owner. Licensee agrees to reproduce and incorporate Osmose Utilities Services Inc.'s copyright notice in any copy or partial copy. The publication may not be distributed, transmitted, sold, published, or otherwise provided, in paper, electronic, or any other format, to any third party without the prior written permission of Osmose Utilities Services, Inc. Licensee shall not modify, translate, decompile, disassemble, or create derivative works based on the contents of this publication. Information in this document is subject to change without notice. Some screens and functions depicted here may differ from those you see in the interface.

Trademarks

Osmose is a registered trademark of Osmose, Inc.

O-Calc Pro is a registered trademark of Osmose Utilities Services, Inc.

Windows, Windows Server 2003, Windows Server 2008, Windows 2000, Windows XP, Windows 7, Windows 10, .Net Framework, Google Earth, Microsoft Report Viewer, Microsoft Office 2010 Primary Interop Assemblies and SQL Server 2008 Report Builder are registered trademarks of Microsoft Corporation. All other trademarks mentioned are the property of their respective owners.



Osmose Utilities Services, Inc.
635 Highway 74 South
Peachtree City, Georgia 30269
Phone: 1-716-319-3747
www.OsmoseUtilities.com

Table of Contents

O-Calc LE Configuration Quick Start Guide..... 4

 Introduction..... 4

 Configuration – Main Components..... 5

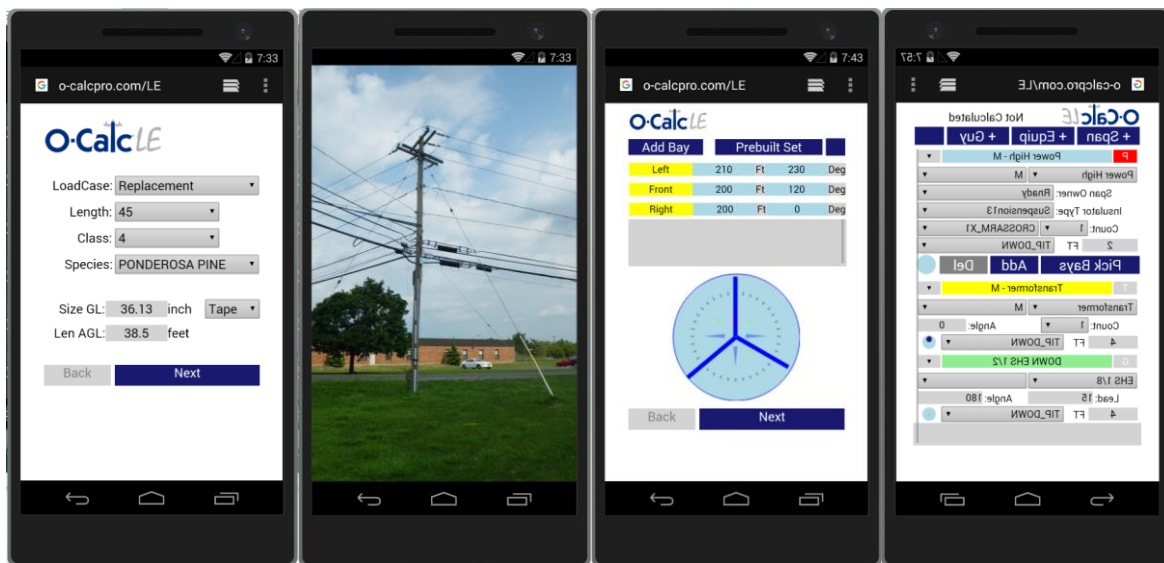
 Configuration – Finer Details 8

 Activating the O-Calc LE Configuration and Management Process 10

O-Calc LE Configuration Quick Start Guide

Introduction

This document is a high level overview of the O-Calc LE process and how to quickly configure it for use. The O-Calc LE process is a field data collection process, which is closely linked to the O-Calc Pro pole loading software. O-Calc LE (Load Estimation) is a process for performing highly accurate modeling and preliminary load estimation of distribution poles using any internet connected device. Once a utility pole has been collected using the O-Calc LE process, it can then later be easily and accurately accessed through the O-Calc Pro application. Within the O-Calc Pro Application it is possible to perform a more detailed pole loading analysis, pole restoration planning, joint use make-ready planning, and a full spectrum of activities supported by the O-Calc Pro family of productivity tools.



The O-Calc LE process consists of four major parts; Configuration, Management, Collection, and Processing. Once the O-Calc LE process has been configured, an O-Calc LE administrative user can manage the various projects, configuration files, and field data collection personnel. The field data collection personnel can log into O-Calc LE to start the data collection part of the process based on the projects/configuration files they have been assigned to. Once the field data collectors have completed the data collection step on a particular pole, this pole will instantaneously be available to the O-Calc LE administrative user for processing within the O-Calc Pro software.

This document concentrates on the steps needed to configure the O-Calc LE configuration file component. For information on how to manage the version configurations, users, and collected pole information, see the document “O-Calc LE – Management Quick Start Guide”. For more information on collecting field data, see the document “O-Calc LE – Field Data Collection Guide”.

Configuration – Main Components

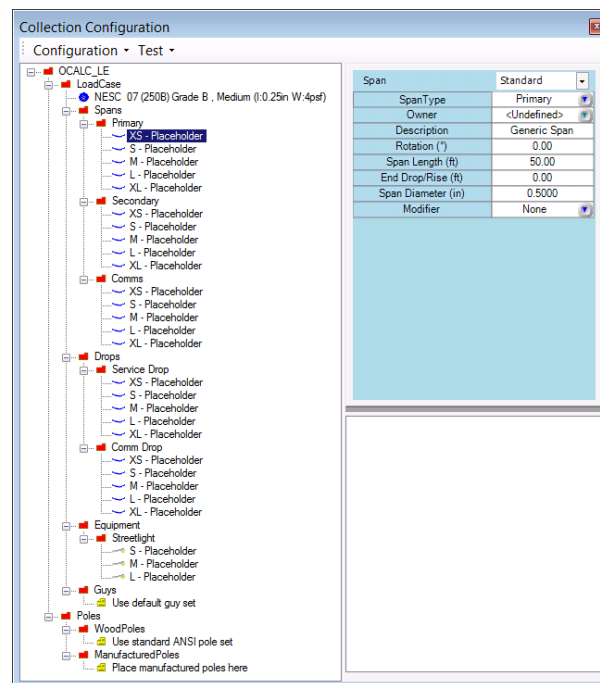
The O-Calc LE configuration step takes place within the O-Calc Pro interface. Using the standard drag-and-drop functionality within O-Calc Pro, a user configures how the O-Calc LE application will appear to the field data collection user while at the same time configuring how field collected data will be mapped to the O-Calc Pro catalog items once the data is processed. In order to create an O-Calc LE configuration, you must have a valid license of the O-Calc Pro software (Version 5.2 or greater) and have the O-Calc Pro Collection Configuration plugin activated. *See the section 'Activating the O-Calc LE Configuration and Management Process' at the end of this document for more details.*

The Collection Configuration plugin enables the user to manage (create, load, save) various O-Calc LE configuration files. It gives the user quick-start templates to make the process of creating a Collection Configuration file easy and efficient. It also provides tools to the user to configure how the O-Calc LE process will appear to the end field data collection user as well as tools to verify that the configuration is correct and complete.

The easiest way to get started on an O-Calc LE configuration is to use the Collection Configuration function:

Configuration -> New Configuration -> O-Calc LE Configuration -> With Placeholders

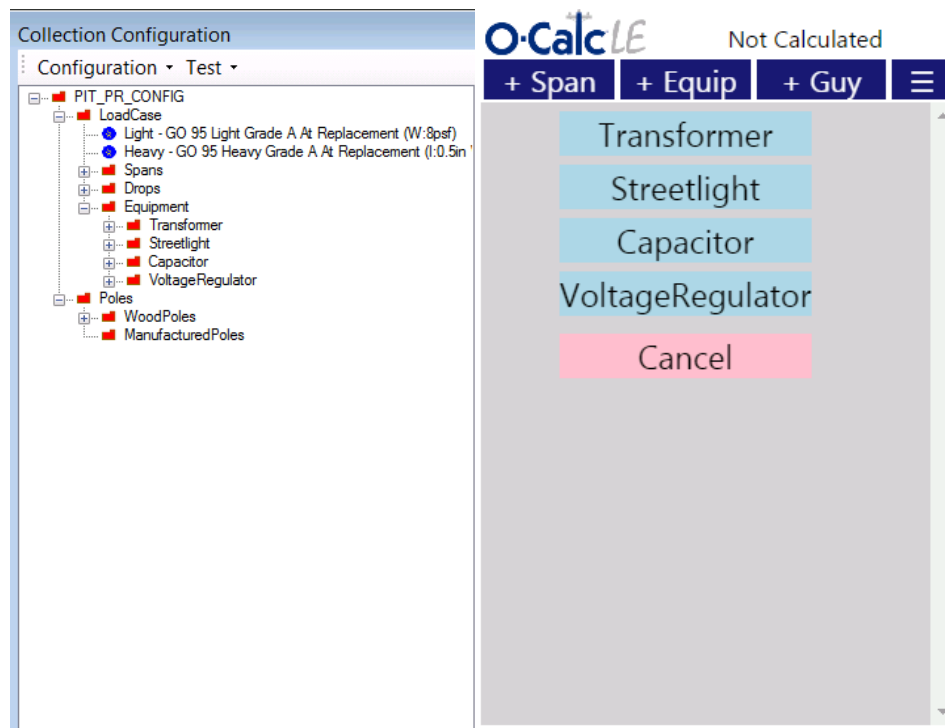
This will create a template data collection configuration as follows:



There are a number of important components to review about this interface before one actually starts to make changes to an O-Calc LE configuration. First off, this Collection Configuration screen has three main sections: the Configuration Panel on the left hand side which is a tree control that can be

expanded/collapsed by clicking on the plus/minus signs. The Attribute Panel is in the upper right hand corner that enables the user to make fine adjustments to the mapped objects as they would exist within O-Calc Pro. Finally, the panel in the lower right hand corner is a Message Display panel which will show results and messages when the user tests the compilation of the configuration.

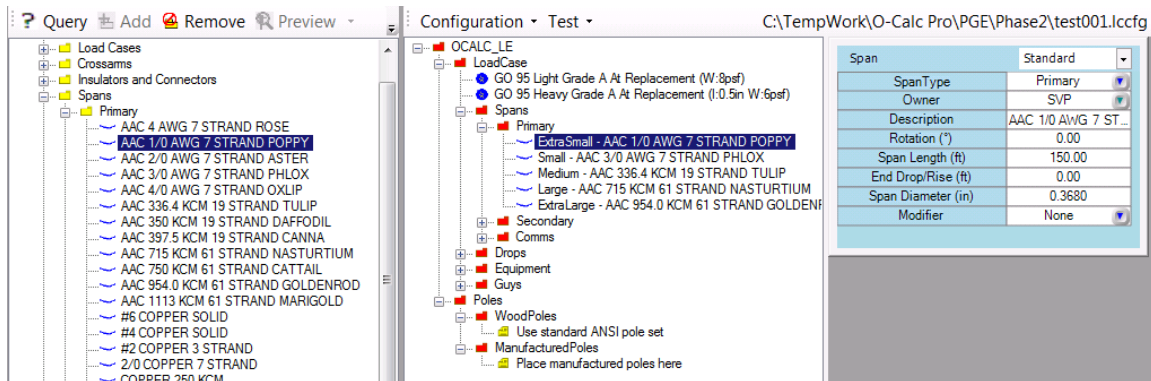
The O-Calc Pro user who performs the O-Calc LE configuration step should also keep in mind that the layout of the configuration panel tree control will also determine the layout of the options within the field data collection screens. For example, the subfolders that are configured within the Spans or Equipment folders will be the subfolders that are displayed within field data collection screens. Below is an example of how the Equipment subfolder was configured within the O-Calc LE configuration panel with subfolders and how the ‘+ Equip’ menu items appears within the O-Calc LE mobile device.



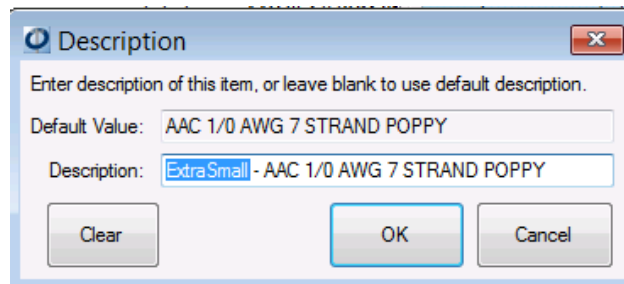
The tree control layout of the O-Calc LE configuration panel gives the user control on how the field data collection process will appear to field data collector, therefore, some careful thought should be given during the configuration phase.

Another important configuration aspect to keep in mind is how individual object names will appear to the field data collector and how they will eventually get mapped to objects within the O-Calc Pro Catalogs. The mapping aspect of the configuration process is accomplished by dragging-and-dropping an item from your standard O-Calc Pro Master or User Catalog onto the corresponding Collection Configuration object. The O-Calc Pro interface will prevent the substitution of incompatible object types. Trying to perform a drag-and-drop substitution from one object type to another object type will display the international “no” symbol. In the screenshot below, five separate AAC primary conductor types were dragged from User Catalog and dropped on top of the in the Collection Configuration tree control primary span placeholders.

The description of these spans is updated within the Collection Configuration with the description as specified in the User Catalog. This description is placed after the first dash (-).



The part of the description before the dash is what will be displayed to the field user within the field data collection windows. And therefore it is important to carefully consider how these descriptions are named. To change the naming of the description before the dash, right click on the Collection Configuration item and select “Description of...”. When the Description dialog box is displayed, the user can adjust the overall description. The key aspect to keep in mind for the description is that the component before the dash (-) is what will be seen in the field and the component after the dash is the object that will be mapped once the data is processed within O-Calc Pro.



Typically, the mapping of the field collected data to the O-Calc Pro object is driven by which Catalog item is dragged-and-dropped during the configuration process. However, the user performing this configuration step can make fine adjustments to this mapping by changing one or more of the attributes within the Attribute Panel. This Attribute Panel works just like the standard O-Calc Pro Data Entry panel, but changes here only affect the object when it is first created in O-Calc Pro after the field data collection step. An Be aware that various changes made in this Attribute Panel only affect the configuration, not the O-Calc Pro catalog items. Once the Collection Configuration is complete and saved, it is a self-contained configuration file and no explicit links or references back to the O-Calc Pro catalog that was originally used.

For each group of objects within a configuration subfolder there are a number of Configuration Keys that adjust how the object responds within the field data collection component of the process. These include the Name of the group of objects, the default install height location and how this is determined (from tip of pole or from groundline), and what the symbol color and text should be. These attributes are accessible

in the Attribute Panel of the Collection Configuration once the subfolder has been selected. The screen shots below gives an example for how Primary group of objects was configured and how they also appear in the O-Calc LE from a field perspective:

ConfigKey	
Name	Primary
Height (ft)	1.00
Measure From	Tip
Symbol Color	Blue
Symbol Text	P

ConfigKey Parameters for Primary Folder 1

O-Calc LE parameters for Primary 1

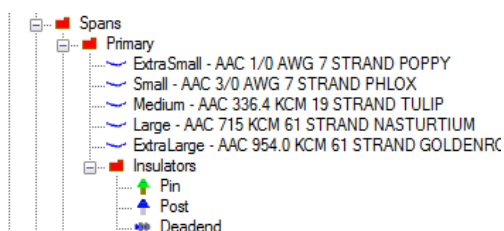
To include and remove various items from the configuration, right click on the item to access such options as removing the item from the configuration, move its location within the configuration, and/or adding more items to the configuration.

Configuration – Finer Details

Once the main components and overall structure of the O-Calc LE configuration process is complete, the configuration user can define details that enable the Field User to collect additional finer details. These details include, the type of insulator, or the owner of the equipment/spans.

If the O-Calc LE configuration calls for the Field User to pick the type of insulator that the spans are attached to, then for each span type the configuration must have a subfolder called ‘Insulators’. Within the ‘Insulator’ subfolder, drag-and-drop any number of insulator objects from an O-Calc Pro catalog. Once within the configuration ‘Insulator’ subfolder, the insulators can be selected to adjust the parameters or moving their position within the list.

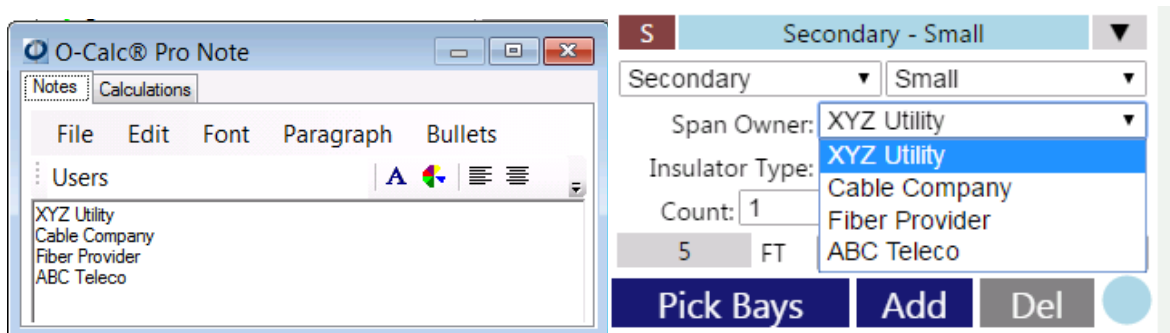
Once the configuration is saved and made active for the project, the field data collection for this span type will not have an option for the Field User to select the type of insulator. The two screen shots below show how the insulator subfolder looks within the configuration and how this also appears within O-Calc LE field data collection component as a drop-down menu called ‘Insulator Type:’.



One can also have an option to collect ownership on objects in the field. The ‘ownership’ object can be placed on spans, drops, guys, and/or equipment items. To have this option available in the O-Calc LE field data collection process, it must be included within the configuration. Ownership pick lists are defined in the configuration with use of a special ‘Note’ object with a list of the various owners. For

example, you can add a 'Note' object within the 'Secondary' span folder with the label "Owners". Then within the Attribute Panel of the Collection Configuration window, one can edit the Contents of the note by pressing the red button. This will open the O-Calc Pro Notes field in which you can add a single line for each Owner type.

In the two screen shots below, a generic set of utility ownerships were defined within the Secondary 'Owners' Note and these same set of owner names are then available on the Secondary object as a 'Span Owner' drop down list. Keep in a mind that different 'Owners' Notes can be defined and placed within different span or equipment subfolders. So for example, Primaries and Transformers may only have a list of electric utility owners, while communication spans might have telco and cable owners.



Activating the O-Calc LE Configuration and Management Process

To include either the “OCalcLE_Configuration.pplugin” or the “OCalcLE_Management.pplugin” to your O-Calc Pro application, you must following the following three step process: Download the Component, Install the Component, and Activate the Component.

1.) Download the Component

To download these components, within the O-Calc Pro interface use the option:

Tools -> Misc... -> Download Plugins and Reports

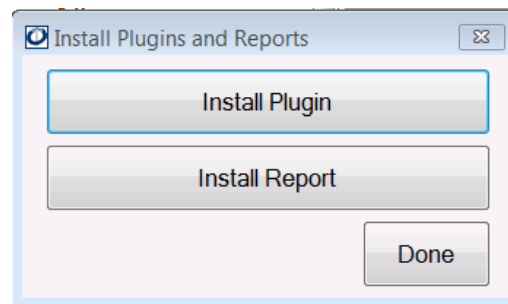
This will launch a web browser that corresponds to your particular installed version of the O-Calc Pro software. Scroll on this page until you find the two O-Calc LE components. A single left click on this component will enable you to download and save the component zip file to a local location on your desktop.

2.) Install the Component

Once the O-Calc LE component has been download, it can be ‘installed’ by using the O-Calc Pro option:

Tools -> Misc... -> Install Plugins and Reports

Which will launch the ‘Install Plugins and Reports’ dialog box:



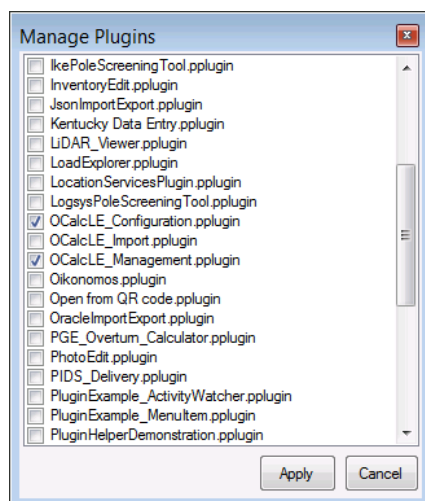
Clicking the “Install Plugin” button will prompt you to navigate to the saved location of the component zip file that was just downloaded. When the file finishes installing, there will be a prompt to restart the O-Calc Application. You can select “No”, as we will do this in the last step.

3.) Activate the Component

In order to now activate the O-Calc LE component, use the O-Calc Pro option:

Options -> Manage Plugins

This will open the ‘Manage Plugin’ dialog box that will show a list of all available plugins.



Checking or unchecking the check box next to any component will activate that component once the “Apply” button is clicked. You will need to select the option to restart O-Calc Pro in order to see these components with the O-Calc Pro interface.