

O-Calc[®] Pro 5.3

An Introduction to Custom Reports using Microsoft Excel

Osmose O-Calc® Pro 5.3
An Introduction to Custom Reports using Microsoft Excel
2018

Copyright

© 2002-2018 Osmose Utilities Services, Inc. All rights reserved.

The contents of this publication are intended for distribution to and use by the licensed owner of the related software, and copies and reproductions of the document may be made solely for use by the owner. Licensee agrees to reproduce and incorporate Osmose Utilities Services Inc.'s copyright notice in any copy or partial copy. The publication may not be distributed, transmitted, sold, published, or otherwise provided, in paper, electronic, or any other format, to any third party without the prior written permission of Osmose Utilities Services, Inc. Licensee shall not modify, translate, decompile, disassemble, or create derivative works based on the contents of this publication. Information in this document is subject to change without notice. Some screens and functions depicted here may differ from those you see in the interface.

Trademarks

Osmose is a registered trademark of Osmose, Inc.

O-Calc Pro is a registered trademark of Osmose Utilities Services, Inc.

Windows, Windows Server 2003, Windows Server 2008, Windows 2000, Windows XP, Windows 7, Windows 10, .Net Framework, Microsoft Report Viewer, Microsoft Office 2010 Primary Interop Assemblies and SQL Server 2008 Report Builder are registered trademarks of Microsoft Corporation. All other trademarks mentioned are the property of their respective owners.



Osmose Utilities Services, Inc.
635 Highway 74 South
Peachtree City, Georgia 30269
Phone: 1-716-319-3747
www.OsmoseUtilities.com

Disclaimer

This document contains dated material. Osmose Utilities Services, Inc. does not warrant the accuracy of information contained within this document. All information is subject to change as required by software and data components distributed with this product. Items marked as “Reserved for future use” imply no promise or intent to supply specific functionality

Table of Contents

About this Document.....	6
Overview	6
Terminology Used in this Document.....	6
Setup	6
Software Requirements.....	6
Getting Started.....	6
Custom Reports Overview.....	6
The Custom Reports Tool.....	6
Accessing the Custom Reports Tool	6
Functions of the Custom Reports Tool.....	7
Creating a New Template File.....	8
Authoring a Report Template	9
Tokens	10
Parameters	10
Tables	11
A Simple Example.....	11
Building on the Simple Example.....	13
Adding Images to the Template.....	15
Adding a Chart	15
Adding a Graphic Image	17
Adding a Photo Image	19
Adding Table Items to the Template	20
Hiding Unexpanded Tokens	23
In Conclusion.....	29
Getting Help	29
Appendix A.....	A-1

About this Document

Overview

A new feature introduced with O-Calc Pro version 5.0 allows users to create a custom report using a preformatted Microsoft Excel file as a template.

This document describes how a user can create simple reports using this feature. It provides a brief introduction and tutorial along with some tips. Users need only be familiar with Microsoft Excel to follow this document.

This document is only a brief introduction. User expertise will determine the level of complexity of reports that can be generated with this feature.

Terminology Used in this Document

Token A specially formatted word, beginning and ending with the percent character (%). Tokens represent values provided by O-Calc Pro that are recognized and transformed by the Custom Report tool.

Setup

Software Requirements

Before starting you should install:

1. Osmose O-Calc® Pro version 5.0 or better
2. Microsoft Excel or other product that can edit and display Excel spreadsheet files version 2010 or better (.xlsx).

Getting Started

Custom Reports Overview

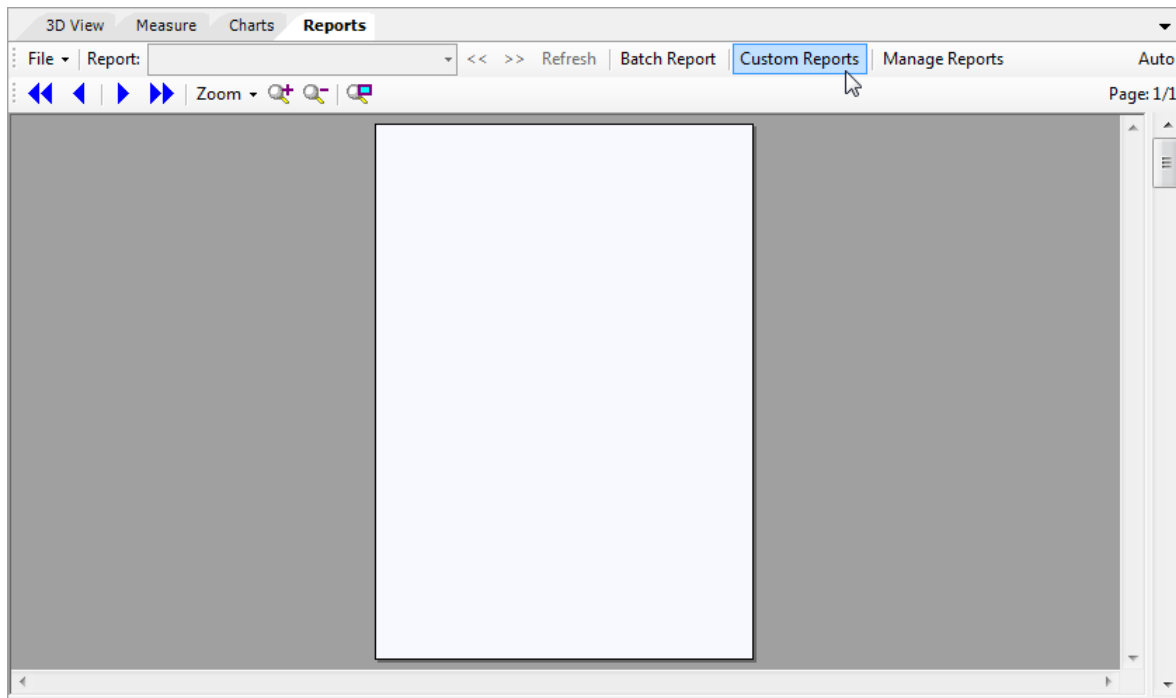
O-Calc® Pro 5.0 provides preformatted reports in its Report View. It also provides a link to a Custom Reports tool. The Custom Reports tool combines some information provided by the O-Calc Pro application with a preformatted Excel spreadsheet that has references to the information and then generates a new Excel spreadsheet that is displayed with the result.

The Custom Reports Tool

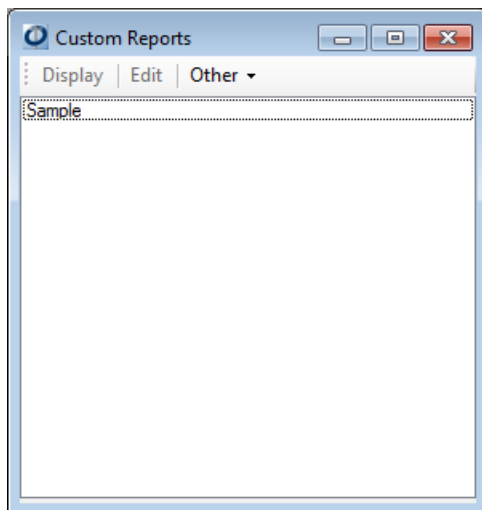
Accessing the Custom Reports Tool

If you are using the default layout you will find the Reports tab near the bottom of the application window. On the menu bar of the Reports tab you will find a command labeled Custom Reports.

You will not need to open a report to create or edit a custom report but you will need an open pole to run the report.



This will open the Custom Reports tool.



In this example, there is already a report template named “Sample” (file name Sample.xlsx).

The Custom Reports tool provides a menu of functions and a list of available templates.

Functions of the Custom Reports Tool

The Custom Reports tool menu provides the following functions

Display

Display is inactive (grayed out) until a pole is loaded and a Custom Report template. When you click this command it combines information from the pole with tokens embedded in the

template file and creates a new Excel spreadsheet which is displayed by invoking Excel (or whatever application you are using for Excel spreadsheets).

Edit

Edit is inactive until a template is selected from the list. When you click this command it invokes the Excel editor product that you have installed opening the selected template for editing. You can make changes and save the template.

You must close the template before clicking the Display command.

Other ► List Available Tokens

This command creates a plain text file containing a list of tokens that are produced by O-Calc Pro and supported by the Custom Report tool. The plain text file is automatically opened for browsing using Notepad. You can save the file for later reference.

The text includes the Token syntax as well as a brief description for each available token.

Other ► Create New Report

This command opens a browser window which allows you to create a blank Excel file. It will not create the file for you. Details follow.

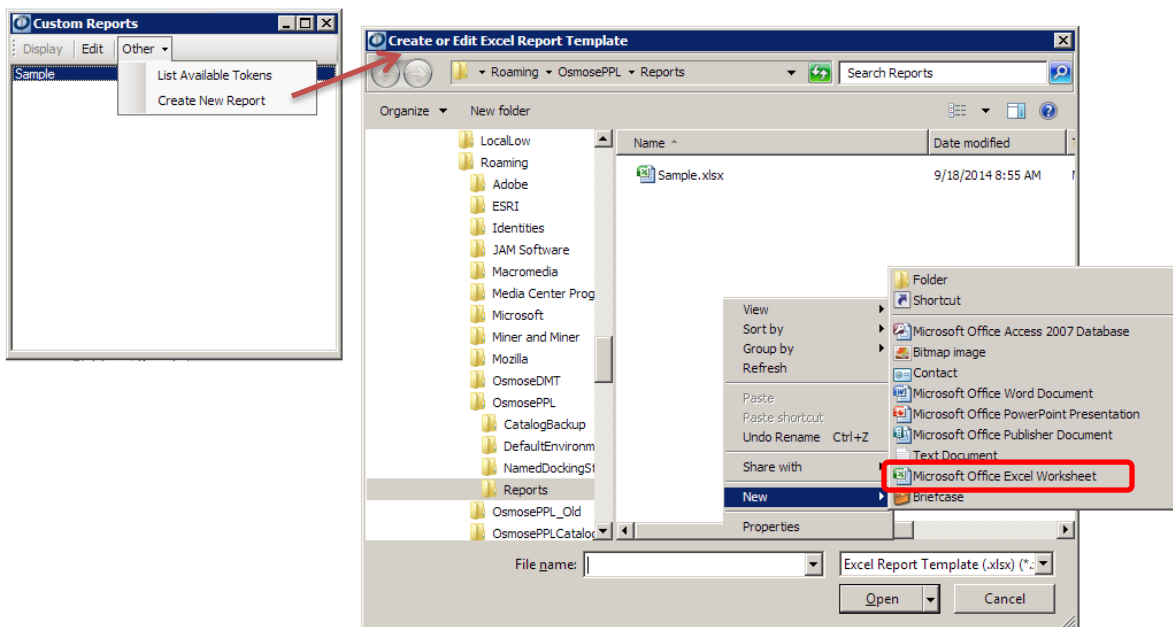
Other ► Help

Displays this document

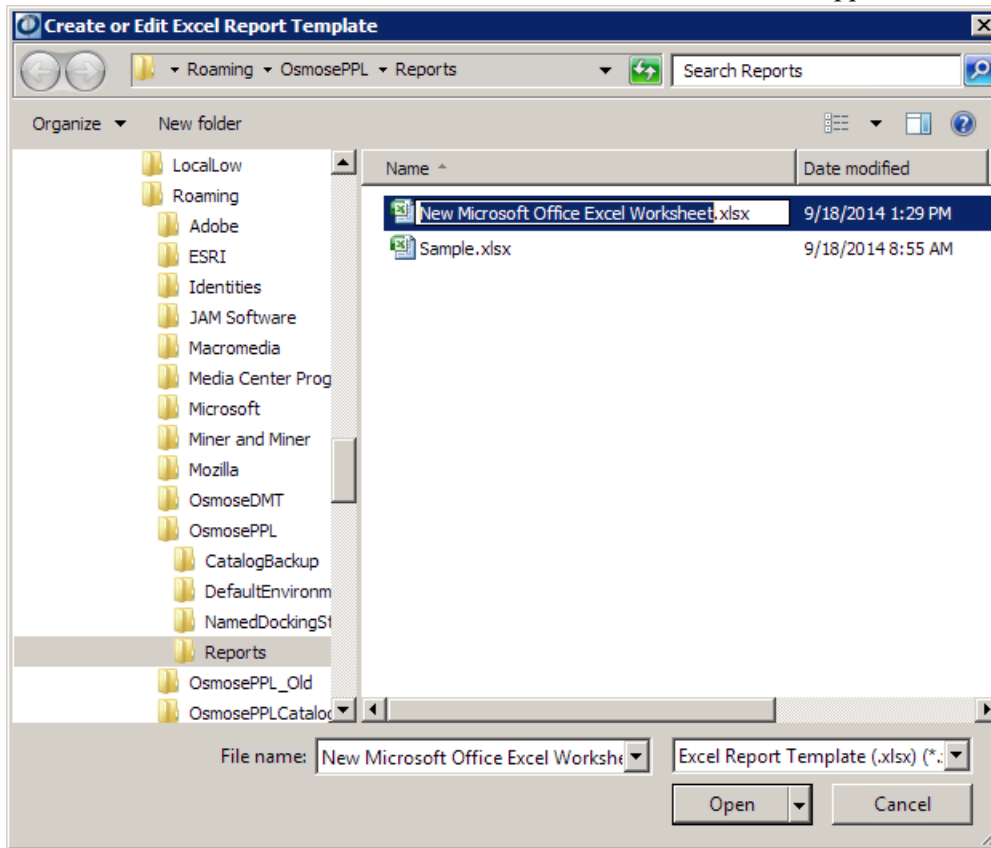
Creating a New Template File

As indicated, the Other ► Create New Report template command does not directly create an empty template file. It simply opens the Reports folder where Custom Reports templates are found. You need to create an empty Excel file using the file browser. Do this:

1. Click Other ► Create New Report. A browser window will open
2. Right click in the file list panel at the right. A context menu will appear.
3. Place the cursor over the “New” command and then select Microsoft Office Excel Worksheet from the file type.



4. A new file named “New Microsoft Office Excel Worksheet.xlsx” will appear.



5. Rename the file, e.g. Sample2.xlsx
 6. Now click on the new file (Sample2.xlsx) and click the Open button. It saves the file and opens it with Microsoft Excel. Note that the Excel application window may be hidden behind O-Calc Pro.

This will create the file in the reports folder. The file is a blank Excel spreadsheet that you could have created with Excel. The only advantage to this method is that it creates the blank template in the Reports folder where the Custom Reports tool will look for it.

Note: If you are using another application to create and edit the spreadsheet you may need to create the template using that application. In that case you should save your worksheet template to the “%userprofile%\appdata\roaming\osmoseppl\reports” folder.

Authoring a Report Template

With all tools in place and an understanding of the Custom Reports tool controls we move on to editing an Excel workbook to act as a template for the Custom Reports tool.

The basic operation is to add plain text, O-Calc Pro tokens and some Excel formulas and objects. Like any Excel workbook you place the information in cells where you want it to be displayed.

Tokens

O-Calc Pro will supply data to the final report by replacing each token found in the workbook with its corresponding value.

There are a number of different types of tokens that return values of different types. You can get a list of tokens and their descriptions by clicking Other ► List Available Tokens. An example list is provided in Appendix A.

Browsing the list you find groups of tokens listed as Parameters and Tables.

With the exception of tokens that return a graphic image, all values, numeric or otherwise are returned as text.

Parameters

Parameters represent a single value related to the Pole or Pole model.

Parameter types include:

Name	Token Prefix	Description
Units	%Units_	Returns text for the specified units. The value of the text will depend on the selected measurement units convention that is selected for the model
Software Version	%Software_Version%	Returns the application version in the format MM.mm.rr .
Pole	%Pole_	Various pole attributes including identification, location, file name, etc.
Sum	%Sum_	Summary values for MCU, GLCU, Vertical Buckling Constant, etc.
Image	%Image:	Various preformatted graphical views including Side, Top, 3D, Capacity Meter, etc. The tokens can be formatted with pixel width and height.
External Image	%ImageFile:	Specifies a means of embedding a path for an external image.
Chart	%Chart:	Returns a graphic image for any of the available chart types. Each chart type includes a pixel width and height.
Block	%Block:	This inserts a range of cells representing a predefined group of values.

Tables

Tables contain indexed values related to structures or objects for which there may be multiple instances for the pole.

There are six tables:

Name	Token Prefix	Description
Anchor	%Anchor_	Attributes of modeled anchors.
Strut	%Strut_	Attributes of modeled struts
Guy	%Guy_	Attributes of modeled guys
Load	%Load_	Attributes of modeled loads
Element	%Element_	Attributes of modeled elements like spans
Images	%Images_	Provides access to all images attached to the model

Each table has a token `<prefix>_row_count%` that indicates the number of rows in the corresponding table.

All other table tokens include an index reference. Indexes are 1 based. The first row of the table starts with index value 1. Attributes on the row are named according to the format `<prefix><AttributeName><Index>%`. As an example if there are four rows in the Anchor table. You can get the Rod Diameter at the Groundline for the 4th anchor in the table by using “%Anchor_RodDiameter_4%”.

A Simple Example

We have already created Sample2.xlsx. If it is not still open then launch the Custom Reports tool, select Sample2.xlsx then click the Edit command on the menu bar.

The file should open in Excel.

This example will display some very simple and basic information about the pole.

Add a title for the report at the top. Click in cell B2 and type “My First Custom Report”.

Next add some labels for the data you are displaying down the side.

A4 – “Pole Number”

A5 – “File Name”

A6 – “Class”

A7 – “Species”

A8 – “Actual Length”

A9 – “Tip Circumference

A10 – “Setting Depth”

Now, next to each label add the value. We want to keep this simple and make sure that the labels are not truncated. We could change the column width but instead we will just start in column C. Add the tokens for the values to the right of the corresponding label. The token names are case sensitive

The literal part of the token name must be spelled exactly as it appears in the ExcelTokens.txt file. *The exception being tokens that include indexes, width height or other variable attributes*

C4 – “%Pole_ID%”

C5 – “%Pole_File_Name%”

C6 – “%Pole_Class%”

C7 – “%Pole_Species%”

C8 – “%Pole_Actual_length%”

C9 – “%Pole_Circum_Tip%”

C10 – “%Pole_SettingDepth%”

When you get done you should have something that looks like this:

	A	B	C	D	E	F
1						
2		My First Custom Report				
3						
4	Pole Number		%Pole_ID%			
5	File Name		%Pole_File_Name%			
6	Class		%Pole_Class%			
7	Species		%Pole_Species%			
8	Actual Length		%Pole_Actual_length%			
9	Tip Circumference		%Pole_Circum_Tip%			
10	Setting Depth		%Pole_SettingDepth%			
11						
12						
13						
14						

Save the template and close the file.

Now open the pole at C:\ProgramData\Documents\O-Calc Pro\Sample Poles\Demo 6 – Span Guy.pplx.

Go back to the Reports tab and open the Custom Reports tool.

Select Sample2 from the list of custom reports and then click the Display command on the Custom Reports tool menu bar.

Excel will open and you should see something like this:

	A	B	C	D	E	F
1						
2			My First Custom Report			
3						
4	Pole Number		Demo 6			
5	File Name		Demo 6 - Span Guy.pplx			
6	Class		3			
7	Species		SOUTHERN PINE			
8	Actual Length		40			
9	Tip Circumference		23			
10	Setting Depth		6			
11						
12						
13						
14						

If you do not see this and you find that a literal token name is displayed, then check for a typo in the token name.

For example:

%Pole_Actual_length%

is correct whereas

%Pole_Actual_Length%

is not correct. You will see “%Pole_Actual_Length%” in the value column.

The token names are case sensitive. In this case “length” is correct and “Length” is not.

Building on the Simple Example

The results that appear are fine except one might ask, what are the dimension units for the height, depth and tip circumference?

We can add that information; in fact we will add it to the label text.

In the Custom Reports tool, select Sample2, click the Edit command and make the following changes:

A8 – “Actual Length (%Units_Len_Large_Abrev%)”

A9 – “Tip Circumference (%Units_Len_Small_Abrev%)”

A10 – “Setting Depth (%Units_Len_Large_Abrev%)”

Sample 2 should now look like this (the C column has been moved to allow the full text to be viewed).

	A	B	C	D	E
1					
2		My First Custom Report			
3					
4	Pole Number		%Pole_ID%		
5	File Name		%Pole_File_Name%		
6	Class		%Pole_Class%		
7	Species		%Pole_Species%		
8	Actual Length (%Units_Len_Large_Abrev%)		%Pole_Actual_length%		
9	Tip Circumference (%Units_Len_Small_Abrev%)		%Pole_Circum_Tip%		
10	Setting Depth (%Units_Len_Large_Abrev%)		%Pole_SettingDepth%		
11					
12					
13					

Save the changes and Display again. The new “Demo 6 – Span Guy_Sample2.xlsx” report should look like this:

	A	B	C	D	E
1					
2		My First Custom Report			
3					
4	Pole Number		Demo 6		
5	File Name		Demo 6 - Span Guy.pplx		
6	Class		3		
7	Species		SOUTHERN PINE		
8	Actual Length (ft)		40		
9	Tip Circumference (in)		23		
10	Setting Depth (ft)		6		
11					
12					
13					

As an exercise, change Sample2.xlsx so that it produces this:

	A	B	C	D	E
1					
2		My First Custom Report			
3					
4	Pole Number		Demo 6		
5	File Name		Demo 6 - Span Guy.pplx		
6	Class		3		
7	Species		SOUTHERN PINE		
8	Actual Length		40 ft		
9	Tip Circumference		23 in		
10	Setting Depth		6 ft		
11					
12					
13					

Adding Images to the Template

O-Calc Pro provides tokens that allow you to add chart and image graphics associated with your pole data. The graphic related tokens indicate an image source and a size in pixels. Add an image by entering a graphic related token in a cell.

When rendered, the graphic will be placed over the cell where the token is placed. Be sure to allow enough room for the graphic to fit without overwriting adjacent cells. There are various ways to avoid this. One way is to merge a range of cells that are large enough to hold the graphic.

The following examples show how to add different types of graphics to the Sample2 template.

Adding a Chart

In this example you will add a Total Stress vs Height chart to the Sample2 report. The chart will be 300 pixels wide and 200 pixels high.

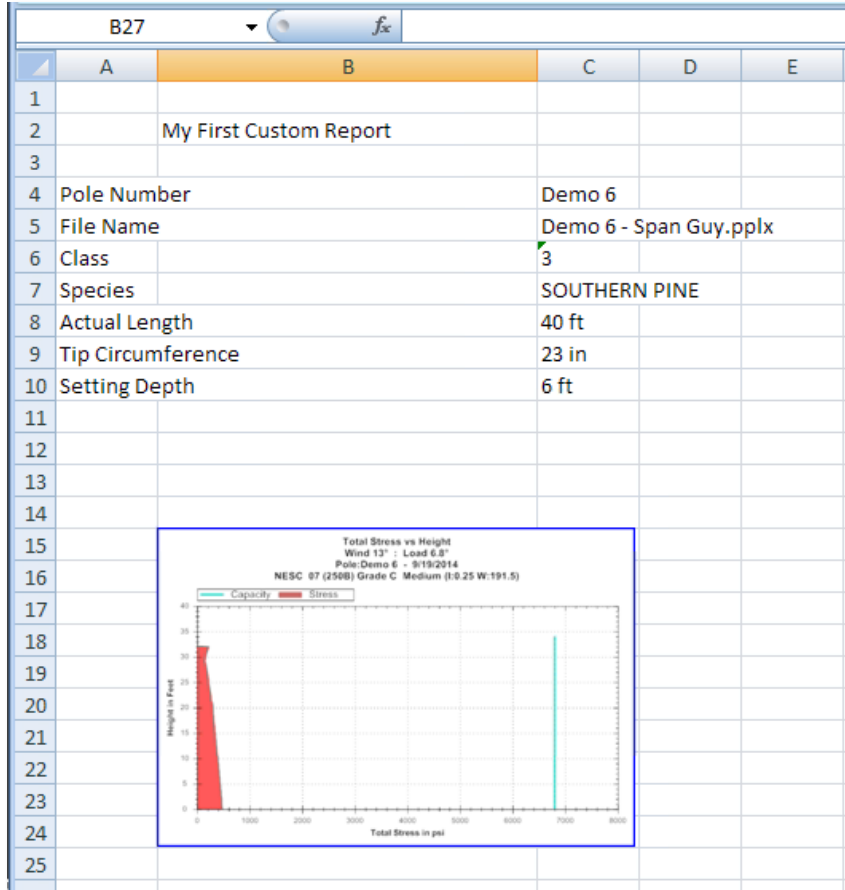
In the Custom Reports tool, select Sample2, click the Edit command and make the following changes:

B15 – “ %Chart:Total_Stress_vs_Height:300,200% “

Sample 2 should now look like this:

	A	B	C	D	E	F	G	H
1								
2		My First Custom Report						
3								
4	Pole Number		%Pole_ID%					
5	File Name		%Pole_File_Name%					
6	Class		%Pole_Class%					
7	Species		%Pole_Species%					
8	Actual Length		%Pole_Actual_Length% %Units_Len_Large_Abrev%					
9	Tip Circumference		%Pole_Circum_Tip% %Units_Len_Small_Abrev%					
10	Setting Depth		%Pole_SettingDepth% %Units_Len_Large_Abrev%					
11								
12								
13								
14								
15		%Chart:Total_Stress_vs_Height:300,200%						
16								

Save the changes and Display again. The new “Demo 6 – Span Guy_Sample2.xlsx” report should look like this:



Note that, in this particular case, the chart covers the cell range B15 to C24. In this case you could modify the Sample2 template to merge this cell range and format it so that the chart is centered in the range.

Adding a Graphic Image

Image tokens work similar to Chart tokens. These tokens allow you to display O-Calc Pro generated graphic images and photographic or external graphic images (e.g. logos).

In our next example you will add a Side view graphic to the right of the chart that you just added. The graphic image will be 300 pixels wide by 300 pixels high.

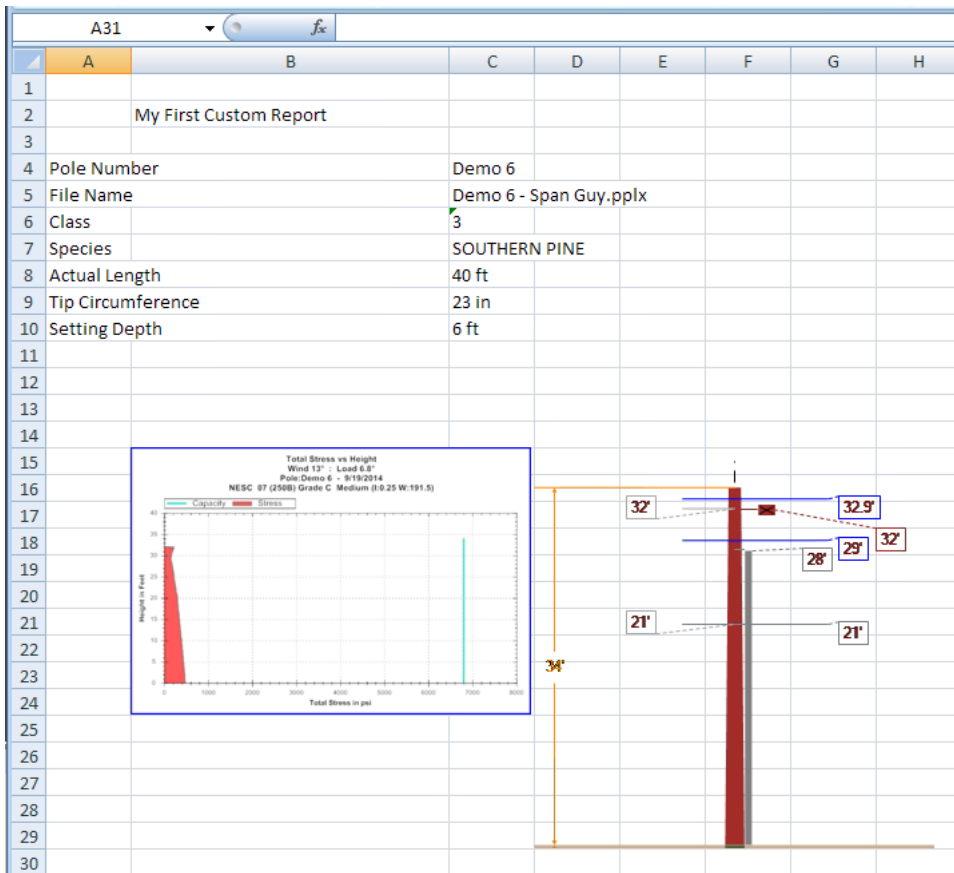
In the Custom Reports tool, select Sample2, click the Edit command and make the following changes:

D15 - “%Image:Side:300,300%”

Sample 2 should now look like this:

A22							
	A	B	C	D	E	F	G
1							
2		My First Custom Report					
3							
4	Pole Number		%Pole_ID%				
5	File Name		%Pole_File_Name%				
6	Class		%Pole_Class%				
7	Species		%Pole_Species%				
8	Actual Length		%Pole_Actual_length% %Units_Len_Large_Abrev%				
9	Tip Circumference		%Pole_Circum_Tip% %Units_Len_Small_Abrev%				
10	Setting Depth		%Pole_SettingDepth% %Units_Len_Large_Abrev%				
11							
12							
13							
14							
15		%Chart:Total_Stress_vs_Height:300,200%		%Image:Side:300,300%			
16							
17							

Save the changes and Display again. The new “Demo 6 – Span Guy_Sample2.xlsx” report should look like this:



Adding a Photo Image

Photographic images that are included with your pole can be displayed using the %Image:Image: <n>,<w>,<h>% token. Since you can have more than one photograph with the file you select the photograph using the <n> value. The first file attached has a value of 0 for <n>, the second has a value of 1, the third is 2, etc. The <w>,<h> values specify the width and height, respectively, in pixels.

In the Custom Reports tool, select Sample2, click the Edit command and make the following changes:

B31 - “%Image:Image:0,300,400%”

You should adjust the width and height values to match the photo image’s aspect ratio. Photo image properties generally supply the photo width and height. For this example, I added a photo that is 1728 pixels wide by 2304 high to the pole file. I really do not want the image to be displayed wider than 300 pixels so I get the proportional height with the following formula.

display height = display width X (Image height / Image width)

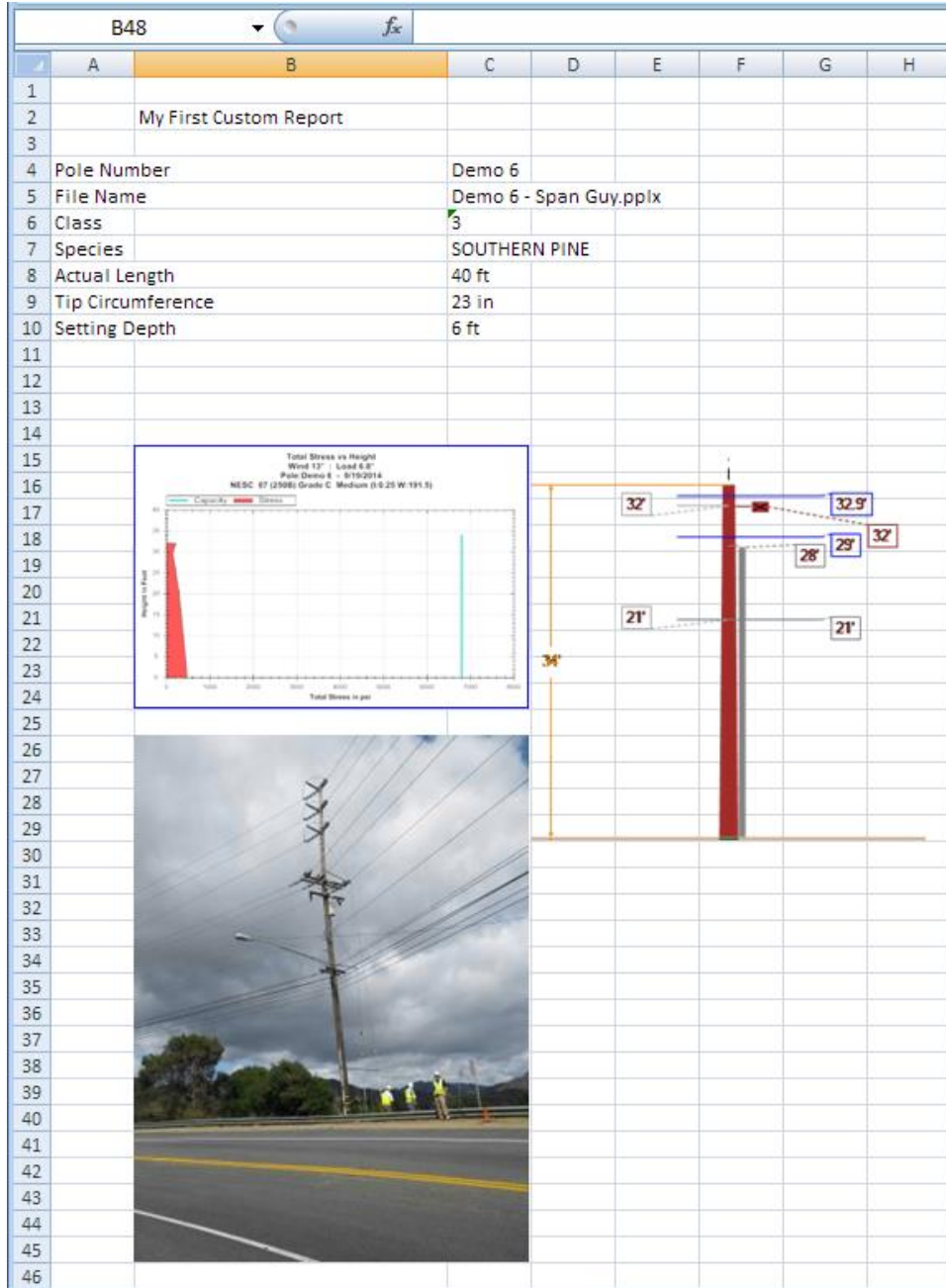
display height = 300 X (2304/1728)

display height = 400

Sample 2 should now look like this:

B35								
	A	B	C	D	E	F	G	H
1								
2		My First Custom Report						
3								
4	Pole Number		%Pole_ID%					
5	File Name		%Pole_File_Name%					
6	Class		%Pole_Class%					
7	Species		%Pole_Species%					
8	Actual Length		%Pole_Actual_Length% %Units_Len_Large_Abrev%					
9	Tip Circumference		%Pole_Circum_Tip% %Units_Len_Small_Abrev%					
10	Setting Depth		%Pole_SettingDepth% %Units_Len_Large_Abrev%					
11								
12								
13								
14								
15		%Chart:Total_Stress_vs_Height:300,200%	%Image:Side:300,300%					
16								
17								
18								
19								
20								
21								
22								
23								
24								
25								
26		%Image:Image:0,300,400%						
27								

Save the changes and Display again. The new “Demo 6 – Span Guy_Sample2.xlsx” report should look like this:



Adding Table Items to the Template

Table tokens address the table name, item name (column) and index (row). When creating a table in the worksheet you must fill in each cell of the table with the specific item name and index.

While there is a way to determine the number of rows, there is no simple way to iterate through the table rows to display all of the data. There may be ways to generate the table automatically but that is beyond the scope of this introduction.

The straight forward method is to fill in all the cells in a range of cells with all tokens for a larger number of rows than you anticipate that you will need.

To demonstrate, you can create a table that displays values for anchors. Open the Sample2 template for edit once more and insert 5 rows between rows 12 and 13.

Next, add values starting at cell B12 to form the table header with title that looks something like this.

B38								
	A	B	C	D	E	F	G	H
12		Anchor Table						
	Owner	Description	Rod Length	Rod Diameter	Rod Strength	Holding Strength	Rated Capacity	
13								

Note that the cells in row 13 have been formatted to allow word wrap.

Next, starting at cell A14 and going across, add the tokens: %Anchor_Owner_1%, %Anchor_Description_1% , %Anchor_RodLengthAGL_1%, %Anchor_RodDiameter_1%, %Anchor_RodStrength_1%, %Anchor_HoldingStrength_1% , %Anchor_Capacity_Rated_1%.

Repeat this for the next row starting at A15 using the index _2 in place of _1 so that for the second row, the tokens will be: %Anchor_Owner_2%, %Anchor_Description_2% , %Anchor_RodLengthAGL_2%, %Anchor_RodDiameter_2%, %Anchor_RodStrength_2%, %Anchor_HoldingStrength_2% , %Anchor_Capacity_Rated_2%.

Do this again for rows 16, 17, 18 using index values _3, _4 and _5 respectively.

Sample 2 should now look like this:

B36									
	A	B	C	D	E	F	G	H	I
1									
2		My First Custom Report							
3									
4	Pole Number		%Pole_ID%						
5	File Name		%Pole_File_Name%						
6	Class		%Pole_Class%						
7	Species		%Pole_Species%						
8	Actual Length		%Pole_Actual_length%	%Units_Len_Large_Abrev%					
9	Tip Circumference		%Pole_Circum_Tip%	%Units_Len_Small_Abrev%					
10	Setting Depth		%Pole_SettingDepth%	%Units_Len_Large_Abrev%					
11									
12		Anchor Table							
13	Owner	Description	Rod Length	Rod Diameter	Rod Strength	Holding Strength	Rated Capacity		
14	%Anchor_	%Anchor_Description_1%	%Anchor_	%Anchor_	%Anchor_	%Anchor_	%Anchor_Capacity_Rated_1%		
15	%Anchor_	%Anchor_Description_2%	%Anchor_	%Anchor_	%Anchor_	%Anchor_	%Anchor_Capacity_Rated_2%		
16	%Anchor_	%Anchor_Description_3%	%Anchor_	%Anchor_	%Anchor_	%Anchor_	%Anchor_Capacity_Rated_3%		
17	%Anchor_	%Anchor_Description_4%	%Anchor_	%Anchor_	%Anchor_	%Anchor_	%Anchor_Capacity_Rated_4%		
18	%Anchor_	%Anchor_Description_5%	%Anchor_	%Anchor_	%Anchor_	%Anchor_	%Anchor_Capacity_Rated_5%		
19									
20									
21		%Chart:Total_Stress_vs_Height:300,200%		%Image:Side:300,300%					
22									
23									
24									
25									
26									
27									
28									
29									
30									
31									
32		%Image:Image:0,300,400%							
33									

In the figure, the token text is not visible due to the superposition of the content of the adjacent column.

Save the changes and Display again. The new “Demo 6 – Span Guy_Sample2.xlsx” report should look like this:

K31										
	A	B	C	D	E	F	G	H	I	J
1										
2		My First Custom Report								
3										
4		Pole Number	Demo 6							
5		File Name	Demo 6 - Span Guy.pplk							
6		Class	3							
7		Species	SOUTHERN PINE							
8		Actual Length	40 ft							
9		Tip Circumference	23 in							
10		Setting Depth	6 ft							
11										
12		Anchor Table								
13		Owner	Description	Rod Length	Rod Diamete	Rod Strength	Holding Strength	Rated	Capacit	
14		<Undefin SINGLE HELIX, 10in		30	0.75	45000	20000	45000		
15		%Anchor %Anchor_Description_2%	%Anchor %Anchor %Anchor %Anchor %Anchor	%Anchor_Capacity_Rated_2%						
16		%Anchor %Anchor_Description_3%	%Anchor %Anchor %Anchor %Anchor %Anchor	%Anchor_Capacity_Rated_3%						
17		%Anchor %Anchor_Description_4%	%Anchor %Anchor %Anchor %Anchor %Anchor	%Anchor_Capacity_Rated_4%						
18		%Anchor %Anchor_Description_5%	%Anchor %Anchor %Anchor %Anchor %Anchor	%Anchor_Capacity_Rated_5%						
19										
20										
21										
22										
23										
24										
25										
26										
27										
28										
29										
30										
31										
32										
33										
34										
35										
36										
37										
38										
39										
40										
41										
42										
43										
44										
45										
46										
47										
48										
49										
50										
51										
52										

There is only one anchor in the demo pole so the first line of the table contains the values for that anchor. However, you notice that the remaining rows simply display the unexpanded tokens.

Hiding Unexpanded Tokens

With a bit of extra effort the template can be modified to display only table values that do not contain the value “%Anchor”.

For this demonstration, add an anchor to the pole so that there will be at least two.

In the Custom Reports tool, select Sample2, click the Edit command and make the following changes:

Select the range of cells A14 to G18.


12		Anchor Table							
13	Owner	Description	Rod Length	Rod Diameter	Rod Strength	Holding Strength	Rated Capacity		
14	%Anchor	%Anchor_Description_1%	%Anchor	%Anchor	%Anchor	%Anchor	%Anchor	Capacity_Rated_1%	
15	%Anchor	%Anchor_Description_2%	%Anchor	%Anchor	%Anchor	%Anchor	%Anchor	Capacity_Rated_2%	
16	%Anchor	%Anchor_Description_3%	%Anchor	%Anchor	%Anchor	%Anchor	%Anchor	Capacity_Rated_3%	
17	%Anchor	%Anchor_Description_4%	%Anchor	%Anchor	%Anchor	%Anchor	%Anchor	Capacity_Rated_4%	
18	%Anchor	%Anchor_Description_5%	%Anchor	%Anchor	%Anchor	%Anchor	%Anchor	Capacity_Rated_5%	

Right click in cell A14, select Filter and then Filter by Selected Cell's Value.

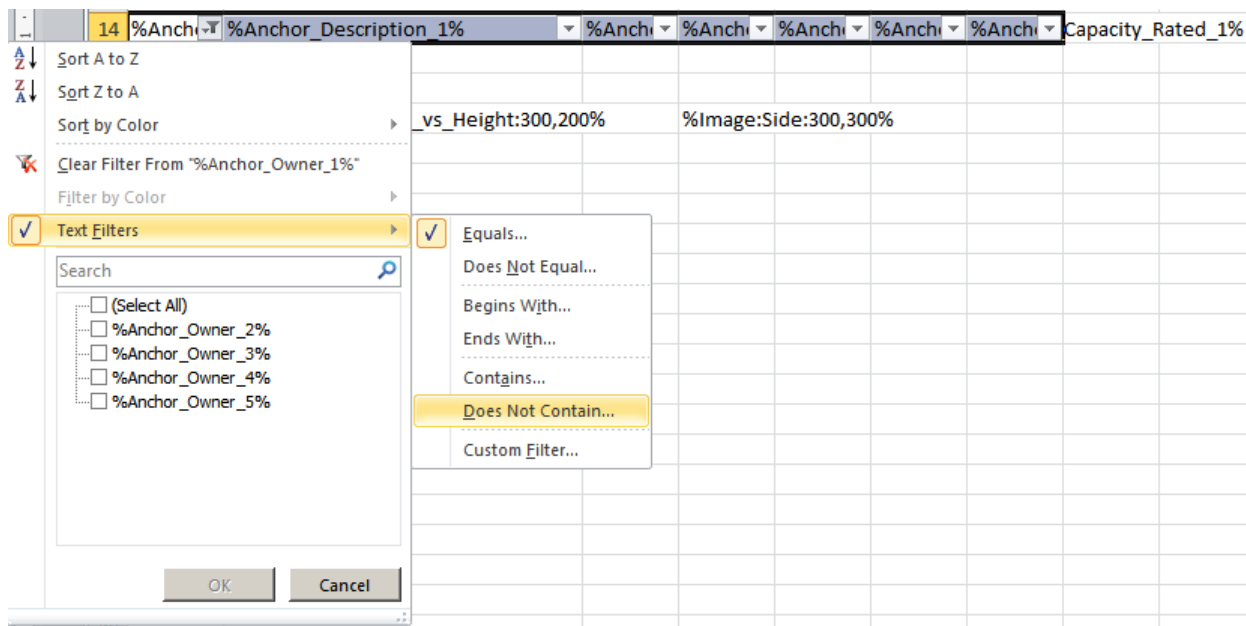
12		Anchor Table							
13	Owner	Description	Rod Length	Rod Diameter	Rod Strength	Holding Strength	Rated Capacity		
14	%Anchor	%Anchor_Description_1%	%Anchor	%Anchor	%Anchor	%Anchor	%Anchor	Capacity_Rated_1%	
15	%Anchor	%Anchor_Description_2%	%Anchor	%Anchor	%Anchor	%Anchor	%Anchor	Capacity_Rated_2%	
16	%Anchor	%Anchor_Description_3%	%Anchor	%Anchor	%Anchor	%Anchor	%Anchor	Capacity_Rated_3%	
17	%Anchor	%Anchor_Description_4%	%Anchor	%Anchor	%Anchor	%Anchor	%Anchor	Capacity_Rated_4%	
18	%Anchor	%Anchor_Description_5%	%Anchor	%Anchor	%Anchor	%Anchor	%Anchor	Capacity_Rated_5%	
19									
20									
21									
22									
23									
24									
25									
26									
27									
28									
29									
30									
31									
32									
33									

Save the changes and Display again. The new “Demo 6 – Span Guy_Sample2.xlsx” report should look like this:

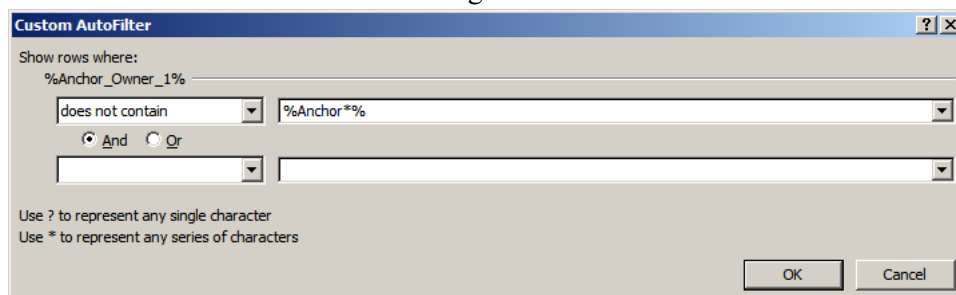
11									
12		Anchor Table							
13	Owner	Description	Rod Length	Rod Diameter	Rod Strength	Holding Strength	Rated Capacity		
14	%Anchor	%Anchor_Description_1%	%Anchor	%Anchor	%Anchor	%Anchor	%Anchor	Capacity_Rated_1%	
19									
20									
21		%Chart:Total_Stress_vs_Height:300,200%		%Image:Side:300,300%					
22									

The range of cells collapses and a filter control, , appears on the A14 cell.

Left click on the filter control and select Text Filters ► Does Not Contain... from the menu.



Enter “%Anchor*%” in the match string field and click OK.



Any row in the range that does not contain an % Anchor token will be displayed.

Sample 2 should now look like this:

A36									
	A	B	C	D	E	F	G	H	I
1									
2		My First Custom Report							
3									
4	Pole Number		%Pole_ID%						
5	File Name		%Pole_File_Name%						
6	Class		%Pole_Class%						
7	Species		%Pole_Species%						
8	Actual Length		%Pole_Actual_length%	%Units_Len_Large_Abrev%					
9	Tip Circumference		%Pole_Circum_Tip%	%Units_Len_Small_Abrev%					
10	Setting Depth		%Pole_SettingDepth%	%Units_Len_Large_Abrev%					
11									
12		Anchor Table							
13	Owner	Description	Rod Length	Rod Diameter	Rod Strength	Holding Strength	Rated Capacity		
14	%Anchor	%Anchor_Description_1%	%Anchor	%Anchor	%Anchor	%Anchor	%Anchor	Capacity_Rated_1%	
19									
20									
21		%Chart:Total_Stress_vs_Height:300,200%		%Image:Side:300,300%					
22									
23									
24									
25									
26									
27									
28									
29									
30									
31									
32		%Image:Image:0,300,400%							
33									

Save the changes and Display again. The new “Demo 6 – Span Guy_Sample2.xlsx” report should look like this:

	A	B	C	D	E	F	G	H
1								
2		My First Custom Report						
3								
4	Pole Number		Demo 6					
5	File Name		Demo 6 - Span Guy.pptx					
6	Class		3					
7	Species		SOUTHERN PINE					
8	Actual Length		40 ft					
9	Tip Circumference		23 in					
10	Setting Depth		6 ft					
11								
12		Anchor Table						
13	Owner	Description	Rod Length	Rod Diamete	Rod Strength	Holding Strength	Rated Capacit	
14	<Under	SINGLE HELIX, 10in	30	0.75	45000	20000	45000	
19								
20								
21								
22								
23								
24								
25								
26								
27								
28								
29								
30								
31								
32								
33								
34								
35								
36								
37								
38								
39								
40								
41								
42								
43								
44								
45								
46								
47								
48								
49								
50								
51								
52								

At this point you might say, “Why is it not displaying the other Anchor?”. To get it to display all the Anchor data you must reapply the filters on the filtered cells of the report worksheet.

Right click on the A14 cell and select Filter ► Reapply. The Anchor table will display all rows of the table that do not contain the text “%Anchor”. The result will look like this.

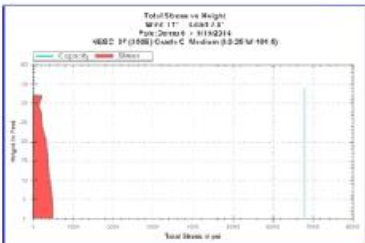
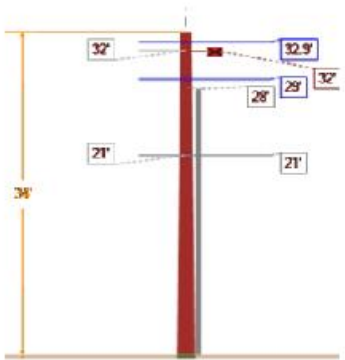

12		Anchor Table					
13	Owner	Description	Rod Length	Rod Diameter	Rod Strength	Holding Strength	Rated Capacity
14	<Undefined>	SINGLE HELIX, 10in	30	0.75	45000	20000	45000
15	<Undefined>	SINGLE HELIX, 10in	30	0.75	45000	20000	45000
19							

You can see how this will be appear when it is printed. Select Print Preview option. The finished report looks something like this.

My First Custom Report

Pole Number: Demo 6
 File Name: Demo 6 - Span Guy.pplx
 Class: 3
 Species: SOUTHERN PINE
 Actual Length: 40 ft
 Tip Circumference: 23 in
 Setting Depth: 6 ft

Owner	Description	Rod Length	Rod Diameter	Rod Strength	Holding Strength	Rated Capacity
<Undefined>	SINGLE HELIX, 10in	30	0.75	45000	20000	45000
<Undefined>	SINGLE HELIX, 10in	30	0.75	45000	20000	45000

In Conclusion

This document has touched on some of the elements that you can use to prepare simple reports using Excel worksheets and O-Calc Pro 5. It has provided a general treatment of the types of tokens and their use. Additional experimentation will be required to achieve a fuller understanding of specific token types.

Experienced Excel users should be able to create useful and well formatted reports using the Custom Report tool features.

Getting Help

Additional help may be available in O-Calc Pro user forums and online documentation. Log on to <http://www.osmoseutilities.com/o-calcpro> for support resources.

Appendix A

This is a sample output listing of tokens produced by the Custom Reports Other ► List Available Tokens command

Parameters	
%Units_Len_Large_Long%	Units of length (Feet or Meters)
%Units_Len_Large_Abrev%	Units of length Abbreviated (ft or m)
%Units_Len_Small_Long%	Units of length (Inches or Centimeters)
%Units_Len_Small_Abrev%	Units of length Abbreviated (in or cm)
%Units_Len_Tiny_Long%	Units of length (Inches or Millimeters)
%Units_Len_Tiny_Abrev%	Units of length Abbreviated (in or mm)
%Units_Press_Large%	Units or Pressure (psf or Pa)
%Units_Press_Small%	Units of Pressure (psi or kPa)
%Units_Load_Long%	Units of Load (Pounds or Newtons)
%Units_Load_Abrev%	Units of Load Abbreviated (lbs or N)
%Units_Weight_Long%	Units of Weight (Pounds or Kilograms)
%Units_Weight_Abrev%	Units of Weight Abbreviated (lbs or kg)
%Units_Moment_Long%	Units of Moment (Foot-Pounds or Newton-Meters)
%Units_Moment_Abrev%	Units of Moment Abbreviated (ft-lb or N-m)
%Units_Vel_Long%	Units of Velocity (Miles Per Hour or Kilometers Per Hour)
%Units_Vel_Abrev%	Units of Velocity Abbreviated (mph or kph)
%Units_Temp_Long%	Units of Temperature (Fahrenheit or Celsius)
%Units_Temp_Abrev%	Units of Temperature Abbreviated (f or c)
%Units_Density_Large_Long%	Units of Density (Pounds Per Cubic Foot or Kilograms Per Cubic Meter)
%Units_Density_Large_Abrev%	Units of Density Abbreviated (pcf or kgm3)
%Software_Version%	Version number of O-Calc Pro
%Pole_ID%	The pole number
%Pole_Latitude%	Latitude
%Pole_Longitude%	Longitude
%Pole_Elevation%	Elevation
%Pole_File_Name%	just the file name not the full path
%Pole_Aux_Data_1%	Free-form string field for customer data
%Pole_Aux_Data_1_Label%	Label assigned by customer
%Pole_Aux_Data_2%	Free-form string field for customer data
%Pole_Aux_Data_2_Label%	Label assigned by customer
%Pole_Aux_Data_3%	Free-form string field for customer data
%Pole_Aux_Data_3_Label%	Label assigned by customer
%Pole_Aux_Data_4%	Free-form string field for customer data
%Pole_Aux_Data_4_Label%	Label assigned by customer
%Pole_Aux_Data_5%	Free-form string field for customer data
%Pole_Aux_Data_5_Label%	Label assigned by customer
%Pole_Aux_Data_6%	Free-form string field for customer data
%Pole_Aux_Data_6_Label%	Label assigned by customer
%Pole_Aux_Data_7%	Free-form string field for customer data
%Pole_Aux_Data_7_Label%	Label assigned by customer
%Pole_Aux_Data_8%	Free-form string field for customer data
%Pole_Aux_Data_8_Label%	Label assigned by customer
%Pole_Mfg_Length%	pole's manufactured length
%Pole_Actual_length%	pole's actual length
%Pole_Class%	pole class designation
%Pole_Species%	wood species or material
%Pole_SettingDepth%	the setting depth
%Pole_Circum_Tip%	circumference at tip
%Pole_Circum_GL_Applied%	circum at groundline as buried in either by spec or measured
%Pole_Circum_GL_Method%	value is either "Calculated" or "Measured"
%Pole_Effective_GL_Circumference%	The effective groundline circumference if pole is damaged
%Pole_GL_Fiber_Stress%	pole groundline fiber stress
%Pole_Fiber_MOR_At_GL%	pole groundline fiber (MOR) stress PSI
%Pole_Material_Constant%	Pole Material Constant
%Pole_Characteristic_Bending_Strength%	pole characteristic bending strength PSI
%Pole_Characteristic_Shear_Strength%	pole characteristic shear strength PSI
%Pole_Characteristic_Compression_Strength%	pole characteristic compression strength PSI
%Pole_Effective_Length%	pole effective length
%Pole_ANSI_FSR_Applied%	Yes or No
%Pole_Allowable_Moment_GL%	the pole's allowable moment if applied

%Pole_Allowable_Stress_GL%	psi or kPa rounded to 0 decimal places
%Pole_Allowable_Moment_At_MCU_Height%	The allowable moment at MCU Height
%Pole_Code%	NESC, GO 95, etc.
%Pole_NESC_Rule%	the NESC rule applied
%Pole_Loading_District%	Heavy, Medium, Light
%Pole_Construction_Grade%	B, C, D
%Pole_Ice_Thickness%	ice thickness
%Pole_Wind_Speed_Applied%	wind speed
%Pole_Rule_250C_Max_Wind_Speed%	Calculated max wind speed for the current load case
%Pole_Wind_Pressure%	Horiz Wind Pressude psf
%Pole_Wind_Angle_Method%	"Manual" or "Automatic"
%Pole_Deflection_Amount%	deflection at tip in inches or centimeters
%Pole_Deflection_Angle%	deflection angle at tip in degrees
%Pole_Structure_Type%	The pole's Structure Type value.
%Pole_New_Or_Existing%	"New" or "Existing"
%Pole_Strength_Factor%	The pole's Strength Factor value.
%Pole_Guy_Strength_Factor%	The pole's Guy Strength Factor value.
%Pole_Anchor_Strength_Factor%	The pole's Anchor Strength Factor value.
%Pole_Transverse_Wind_Load_Factor%	The pole's Transverse Wind Load Factor value.
%Pole_Wire_Tension_Load_Factor%	The pole's Wire Tension Load Factor value.
%Pole_Modulus_Of_Elasticity%	psi or kpa to the nearest whole number
%Pole_Vertical_Load_Factor%	The pole's Vertical Load Factor value.
%Pole_Factor_Of_Safety%	The pole's Factor Of Safety value.
%Pole_Installation_Or_Replacement%	The pole's Installation Or Replacement value.
%Pole_Density%	The pole's Density value.
%Pole_Ice_Density%	The pole's Ice Density value.
%Pole_Tilt%	amount of pole lean if any direction
%ASNZS_Strength_Reduction_Factor%	AS/NZS 7000 Strength Reduction Factor
%ASNZS_Stability_Factor%	AS/NZS 7000 Stability Factor
%ASNZS_Load_Duration_Factor%	AS/NZS 7000 Load Duration Factor
%ASNZS_Immaturity_Factor%	AS/NZS 7000 Immaturity Factor
%ASNZS_Shaving_Factor%	AS/NZS 7000 Shaving Factor
%ASNZS_Processing_Factor%	AS/NZS 7000 Processing Factor
%ASNZS_Degradation_Factor%	AS/NZS 7000 Degradation Factor
%ASNZS_Shear_Area_Mode%	AS/NZS 7000 Shear Area Mode
%ASNZS_Combined_Bending_and_Compression%	AS/NZS 7000 Combined Bending and Compression
%ASNZS_Combined_Shear_and_Torsion%	AS/NZS 7000 Combined Shear and Torsion
%Sum_MCU%	percent 0-100, 1 place after decimal
%Sum_GLCU%	percent 0-100, 1 place after decimal
%Sum_Vertical_Buckling_CU%	percent 0-100, 1 place after decimal
%Sum_MCU_Height%	feet or meters, 1 place after decimal
%Sum_GLCU_Height%	feet or meters, 1 place after decimal
%Sum_Vertical_Buckling_Constant%	Summary Vertical Buckling Constant value.
%Sum_Vertical_Buckling_Column_Height%	Summary Vertical Buckling Column Height value.
%Sum_Vertical_Buckling_Section_Pct_Column_Height%	Summary Vertical Buckling Section Pct Column Height value.
%Sum_Vertical_Buckling_Section_Diameter%	Summary Vertical Buckling Section Diameter value.
%Sum_Vertical_Buckling_Min_GL_Diameter%	Summary Vertical Buckling Min GL Diameter value.
%Sum_Vertical_Buckling_Margin_Of_Safety%	Summary Vertical Buckling Margin Of Safety value.
%Sum_MCU_Wind_Angle%	Summary MCU Wind Angle value.
%Sum_GLCU_Wind_Angle%	Summary GLCU Wind Angle value.
%Sum_Wind_Angle%	Summary Wind Angle value.
%Sum_MCU_Load_Angle%	Summary MCU Load Angle value.
%Sum_GLCU_Load_Angle%	Summary GLCU Load Angle value.
%Sum_Reporting_Angle%	reporting angle, determined by the deflection angle at the tip
%Sum_Reporting_Angle_Type%	Summary Reporting Angle Type value.
%Sum_Vertical_Buckling_Wind_Angle%	Summary Vertical Buckling Wind Angle value.
%Sum_Bending_Moment_GL%	Summary Bending Moment GL value.
%Sum_Bending_Moment_Max%	Summary Bending Moment Max value.
%Sum_Vertical_Buckling_Load%	lbs or newtons vertical load at buckling height
%Sum_Vertical_Buckling_Capacity%	Summary Vertical Buckling Capacity value.
%Sum_Pole_Status%	"Adequate", "Near Capacity", "Fail"
%Sum_Anchor_Status%	Summary Anchor Status value.
%Sum_Guy_Status%	Summary Guy Status value.
%Sum_Guy_Solved%	Yes or No
%Block:AttachSum%	Pole attachment summary block
%Image:Side:<w>,<h>%	Side (schamatic) view of pole. (W and H in pixels)
%Image:Top:<w>,<h>%	Top down view of pole. (W and H in pixels)
%Image:3D:<w>,<h>%	3D view of the pole. (W and H in pixels)

%Image:Meter:<w>,<h>% The capacity meter display. (W and H in pixels)
 %Image:Image:<n>,<w>,<h>% Associated image <n>. (W and H in pixels)
 %ImageFile:<image file path>,<w>,<h>% External image file <n>. (W and H in pixels)
 %Chart:Anchor_Load_vs_Wind_Angle:<w>,<h>% The Anchor Load vs Wind Angle chart. (W and H in pixels)
 %Chart:Bending_Moment_vs_Height:<w>,<h>% The Bending Moment vs Height chart. (W and H in pixels)
 %Chart:Bending_Moment_vs_Wind_Angle:<w>,<h>% The Bending Moment vs Wind Angle chart. (W and H in pixels)
 %Chart:Capacity_Utilization_vs_Height:<w>,<h>% The Capacity Utilization vs Height chart. (W and H in pixels)
 %Chart:Capacity_Utilization_vs_Wind_Angle:<w>,<h>% The Capacity Utilization vs Wind Angle chart. (W and H in pixels)
 %Chart:Deflection_vs_Height:<w>,<h>% The Deflection vs Height chart. (W and H in pixels)
 %Chart:Guy_Tension_vs_Wind_Angle:<w>,<h>% The Guy Tension vs Wind Angle chart. (W and H in pixels)
 %Chart:Shear_Load_vs_Height:<w>,<h>% The Shear Load vs Height chart. (W and H in pixels)
 %Chart:Rotational_Torque_vs_Height:<w>,<h>% The Rotational Torque vs Height chart. (W and H in pixels)
 %Chart:Tension_Force_vs_Height:<w>,<h>% The Tension Force vs Height chart. (W and H in pixels)
 %Chart:Total_Stress_vs_Height:<w>,<h>% The Total Stress vs Height chart. (W and H in pixels)
 %Chart:Total_Stress_vs_Wind_Angle:<w>,<h>% The Total Stress vs Wind Angle chart. (W and H in pixels)
 %Chart:Wind_Force_vs_Height:<w>,<h>% The Wind Force vs Height chart. (W and H in pixels)
 %Chart:Vertical_Capacity_vs_Height:<w>,<h>% The Vertical Capacity vs Height chart. (W and H in pixels)
 %Chart:Combined_Capacity_vs_Height:<w>,<h>% The Combined Capacity vs Height chart. (W and H in pixels)

| Tables

Table : Anchor

%Anchor_row_count% Number of rows in the Anchor table.
 %Anchor_Owner_<n>% Value of Owner for row N
 %Anchor_RodLengthAGL_<n>% Value of RodLengthAGL for row N
 %Anchor_RodDiameter_<n>% Value of RodDiameter for row N
 %Anchor_RodStrength_<n>% Value of RodStrength for row N
 %Anchor_HoldingStrength_<n>% Value of HoldingStrength for row N
 %Anchor_Description_<n>% Value of Description for row N
 %Anchor_Capacity_Allowable_<n>% Value of Capacity Allowable for row N
 %Anchor_Capacity_Rated_<n>% Value of Capacity Rated for row N
 %Anchor_Capacity_Consumed_<n>% Value of Capacity Consumed for row N
 %Anchor_Capacity_Consumed_Max_<n>% Value of Capacity Consumed Max for row N
 %Anchor_Angle_<n>% Value of Angle for row N
 %Anchor_Offset_<n>% Value of Offset for row N
 %Anchor_Status_<n>% Value of Status for row N
 %Anchor_StrengthFactor_<n>% Value of StrengthFactor for row N

Table : Strut

%Strut_row_count% Number of rows in the Strut table.
 %Strut_StrutLength_<n>% Value of StrutLength for row N
 %Strut_StrutDiameter_<n>% Value of StrutDiameter for row N
 %Strut_StrutHeight_<n>% Value of StrutHeight for row N
 %Strut_Angle_<n>% Value of Angle for row N
 %Strut_StrutCapacity_<n>% Value of StrutCapacity for row N
 %Strut_StrutTotalAppliedLoad_<n>% Value of StrutTotalAppliedLoad for row N
 %Strut_StrengthFactor_<n>% Value of StrengthFactor for row N

Table : Guy

%Guy_row_count% Number of rows in the Guy table.
 %Guy_Description_<n>% Value of Description for row N
 %Guy_Type_<n>% Value of Type for row N
 %Guy_Owner_<n>% Value of Owner for row N
 %Guy_Capacity_Rated_<n>% Value of Capacity Rated for row N

%Guy_Capacity_Allowable_<n>%	Value of Capacity Allowable for row N
%Guy_Capacity_Consumed_<n>%	Value of Capacity Consumed for row N
%Guy_Capacity_Consumed_Max_<n>%	Value of Capacity Consumed Max for row N
%Guy_Diameter_<n>%	Value of Diameter for row N
%Guy_Height_<n>%	Value of Height for row N
%Guy_HeightAtOtherEnd_<n>%	Value of HeightAtOtherEnd for row N
%Guy_InclineAngle_<n>%	Value of InclineAngle for row N
%Guy_PreTension_<n>%	Value of PreTension for row N
%Guy_TensionAllowable_<n>%	Value of TensionAllowable for row N
%Guy_TensionAppliedTotal_<n>%	Value of TensionAppliedTotal for row N
%Guy_TensionAppliedHorizontal_<n>%	Value of TensionAppliedHorizontal for row N
%Guy_TensionHorizontalResolved_<n>%	Value of TensionHorizontalResolved for row N
%Guy_TensionAppliedVertical_<n>%	Value of TensionAppliedVertical for row N
%Guy_LeadLength_<n>%	Value of LeadLength for row N
%Guy_LeadAngle_<n>%	Value of LeadAngle for row N
%Guy_ModulusOfElasticity_<n>%	Value of ModulusOfElasticity for row N
%Guy_RTSstrength_<n>%	Value of RTSstrength for row N
%Guy_RestingLength_<n>%	Value of RestingLength for row N
%Guy_StretchAtCurrentTension_<n>%	Value of StretchAtCurrentTension for row N
%Guy_Weight_<n>%	Value of Weight for row N
%Guy_Wind_Angle_<n>%	Value of Wind Angle for row N
%Guy_Status_<n>%	Value of Status for row N
%Guy_MomentFromLeaning_<n>%	Value of MomentFromLeaning for row N
%Guy_MomentFromTension_<n>%	Value of MomentFromTension for row N
%Guy_MomentFromOffset_<n>%	Value of MomentFromOffset for row N
%Guy_MomentFromWind_<n>%	Value of MomentFromWind for row N
%Guy_MomentSumAtGL_<n>%	Value of MomentSumAtGL for row N
%Guy_StrengthFacor_<n>%	Value of StrengthFacor for row N
%Guy_PercentSolid_<n>%	Value of PercentSolid for row N

Table : Load

%Load_row_count%	Number of rows in the Load table.
%Load_Height_<n>%	Value of Height for row N
%Load_Type_<n>%	Value of Type for row N
%Load_Description_<n>%	Value of Description for row N
%Load_Percent_MCU_<n>%	Value of Percent MCU for row N
%Load_Percent_GLCU_<n>%	Value of Percent GLCU for row N
%Load_Percent_VerticalCU_<n>%	Value of Percent VerticalCU for row N

Table : Element

%Element_row_count%	Number of rows in the Element table.
%Element_Description_<n>%	Value of Description for row N
%Element_Type_<n>%	Value of Type for row N
%Element_SubType_<n>%	Value of SubType for row N
%Element_Owner_<n>%	Value of Owner for row N
%Element_Priority_<n>%	Value of Priority for row N
%Element_AttachHeight_<n>%	Value of AttachHeight for row N
%Element_OtherEndHeight_<n>%	Value of OtherEndHeight for row N
%Element_Sag_<n>%	Value of Sag for row N
%Element_Offset_<n>%	Value of Offset for row N
%Element_GapToPole_<n>%	Value of GapToPole for row N
%Element_OffsetAngle_<n>%	Value of OffsetAngle for row N
%Element_RotateAngle_<n>%	Value of RotateAngle for row N
%Element_InclineAngle_<n>%	Value of InclineAngle for row N
%Element_CableDiameter_<n>%	Value of CableDiameter for row N
%Element_CableModulusOfElasticity_<n>%	Value of CableModulusOfElasticity for row N
%Element_CableRTSstrength_<n>%	Value of CableRTSstrength for row N
%Element_CableAllowableTension_<n>%	Value of CableAllowableTension for row N
%Element_CableInitialTension_<n>%	Value of CableInitialTension for row N
%Element_CableRequiredTension_<n>%	Value of CableRequiredTension for row N
%Element_CableAppliedTension_<n>%	Value of CableAppliedTension for row N
%Element_SagTensionType_<n>%	Value of SagTensionType for row N

%Element_SagMinimum_<n>%	Value of SagMinimum for row N
%Element_SagNominal_<n>%	Value of SagNominal for row N
%Element_SagMaximum_<n>%	Value of SagMaximum for row N
%Element_WindDragCoef_<n>%	Value of WindDragCoef for row N
%Element_LeadAngle_<n>%	Value of LeadAngle for row N
%Element_UnitWeight_<n>%	Value of UnitWeight for row N
%Element_UnitHeight_<n>%	Value of UnitHeight for row N
%Element_UnitWidth_<n>%	Value of UnitWidth for row N
%Element_UnitDiameter_<n>%	Value of UnitDiameter for row N
%Element_UnitLength_<n>%	Value of UnitLength for row N
%Element_ShapeFactor_<n>%	Value of ShapeFactor for row N
%Element_CableWeightPerUnitLength_<n>%	Value of CableWeightPerUnitLength for row N
%Element_CableLengthLead_<n>%	Value of CableLengthLead for row N
%Element_CableLengthTotal_<n>%	Value of CableLengthTotal for row N
%Element_Tension_<n>%	Value of Tension for row N
%Element_GuyLengthAtMcu_<n>%	Value of GuyLengthAtMcu for row N
%Element_MomentFromLeaning_<n>%	Value of MomentFromLeaning for row N
%Element_MomentFromTension_<n>%	Value of MomentFromTension for row N
%Element_MomentFromOffset_<n>%	Value of MomentFromOffset for row N
%Element_MomentFromWind_<n>%	Value of MomentFromWind for row N
%Element_MomentSumAtGL_<n>%	Value of MomentSumAtGL for row N
%Element_ShearLoad_<n>%	Value of ShearLoad for row N
%Element_PercentAppliedLoad_<n>%	Value of PercentAppliedLoad for row N
%Element_PercentAppliedMoment_<n>%	Value of PercentAppliedMoment for row N
%Element_PercentPoleMomentCapacity_<n>%	Value of PercentPoleMomentCapacity for row N
%Element_BendingStress_<n>%	Value of BendingStress for row N
%Element_VerticalLoad_<n>%	Value of VerticalLoad for row N
%Element_VerticalStress_<n>%	Value of VerticalStress for row N
%Element_TotalStress_<n>%	Value of TotalStress for row N
%Element_PercentPoleStressCapacity_<n>%	Value of PercentPoleStressCapacity for row N
%Element_NoteAuthor_<n>%	Value of NoteAuthor for row N
%Element_NoteDate_<n>%	Value of NoteDate for row N
%Element_NoteContents_<n>%	Value of NoteContents for row N

Table : Images

%Images_row_count%	Number of rows in the Images table.
%Images_ImagePath_<n>%	Value of ImagePath for row N